

## SPECIFICATIONS

### SPECIFICATIONS

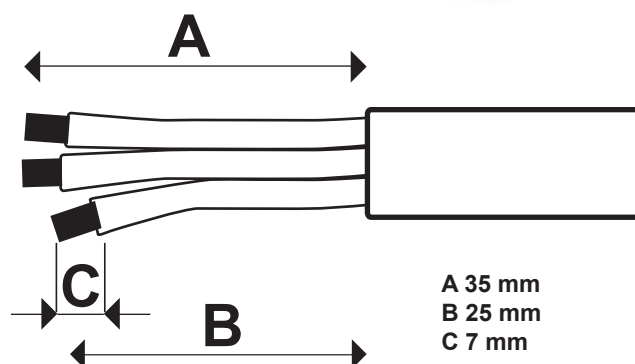
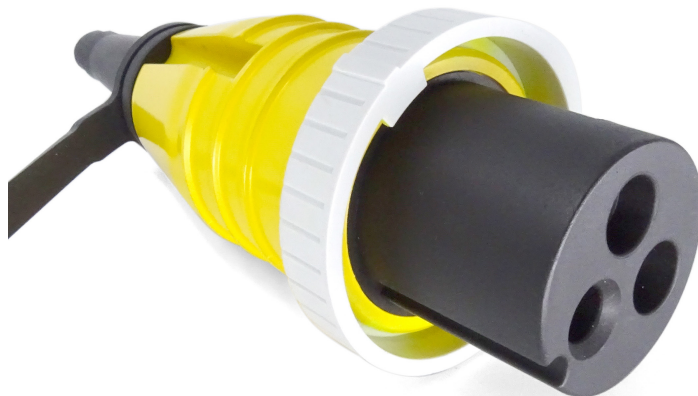
<b>General:</b>	<b>Z2016001</b>
→ Connections:	2p + E
→ Voltage:	250V
→ Maximum current (Amp):	16A / 250V
<b>Materials:</b>	
→ Housing:	PA6 glass filled
→ Contact blades/terminal parts:	Nickel plated brass

### COLOUR CODES

<b>Function:</b>	<b>Wire colour:</b>
PE (ground)	Yellow/Green
N (Neutral)	Blue
L1 (phase, load)	Brown or black

### RECOMMENDED WIRE SIZE

Voltage (Volts)	Current Amp	
250V AC	16A	



SPINA  
CONNECTOR  
**Z2016001**



**WARNING:**  
THIS INLET IS INTENDED FOR BOATS WIRED FOR THE EUROPEAN MARKET.  
RATING: 16A/250VAC (50Hz)

THE REQUIREMENTS FOR INSTALLATION OF ELECTRICAL SYSTEMS  
ON CRAFT OF HULL LENGTH UP TO 24M ARE SPECIFIED IN THE  
ISO 13297 STANDARD